

Medium and fine protection for two-core systems 48 V



Surge protection for use in measurement and control technology

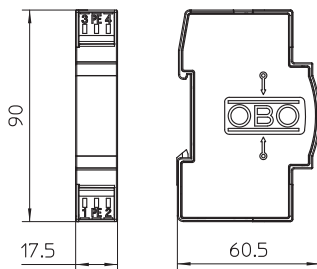


- Medium and fine protection
- Standard design for double core systems
- Two-stage protection circuit
- With installation-friendly, screwless connection terminals
- In space-saving 17.5 mm grid
- With ohmic decoupling in the longitudinal branch

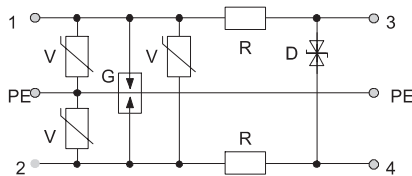
Application: Universal use on any 35 mm DIN profile rail in every commercially available distributor housing.

| Type | Highest continuous voltage AC V | Highest continuous voltage DC V | Number of poles | Connection system | Pack. pcs | Weight kg/100 pcs. | Item No. |
|--------|---------------------------------|---------------------------------|-----------------|-------------------|-----------|--------------------|----------|
| FRD 48 | 37 | 53 | 2 | Terminal | 1 | 5,100 | 5098522 |

Dimensions



Connection options



FRD 48

| | | |
|--|----------------|----------------------------|
| Maximum continuous voltage AC V | U _c | 37 |
| Maximum continuous voltage DC V | U _c | 53 |
| Category | | Type 1+2+3 / D1+C2+C1 |
| Lightning protection zone LPZ | | 0→3 |
| Number of poles | | 2 |
| Rated current A | I _n | 0,2 |
| Series resistance per wire | | 15 Ω ± 10 % |
| Impulse durability wire-wire | | C2: 5 kV / 2,5 kA (8/20μs) |
| Impulse durability wire-earth | | C2: 10 kV / 5 kA (8/20μs) |
| Total discharge current (8/20) kA | | 10 |
| Total discharge current (10/350) kA | | D1: 3 |
| Protection level wire-wire V | | <140 |
| Protection level wire-earth V | | <600 |
| Temperature range °C | θ | -40-80 |
| Installation type | | Hat rail 35 mm |
| Connection system | | Terminal |
| Division unit TE (17.5 mm) | | 1 |
| Protection rating | | IP20 |
| Connection cross-section, flexible mm ² | | 0,14-2,5 |
| Connection cross-section, multi-wire mm ² | | 0,14-2,5 |
| Connection cross-section rigid mm ² | | 0,14-2,5 |
| Earthing via: | | Terminal |
| Testing standard | | IEC 61643-21 |